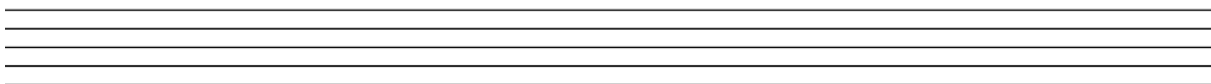


**Stupnice Es dur a c mol. Opakovanie trojzvukov a nôt.
(1.ročník)**

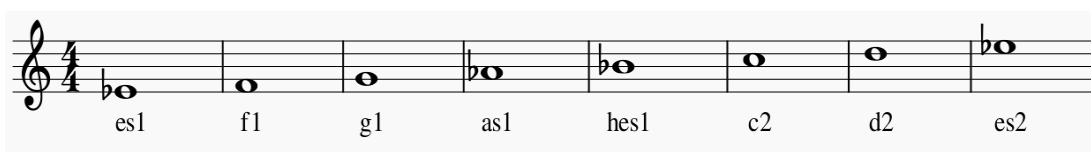
Nakresli trojzvuky v basovom klúči: e mol od E, d mol od d, C dur od C, G dur od g, F dur od F.

Trojzvuk alebo kvintakord je súzvuk prvého, tretieho a piateho tónu stupnice



Dnes sa naučíme ďalšie dve nové stupnice **Es dur a c mol**. Obe majú 3 béčka bé, es, as.

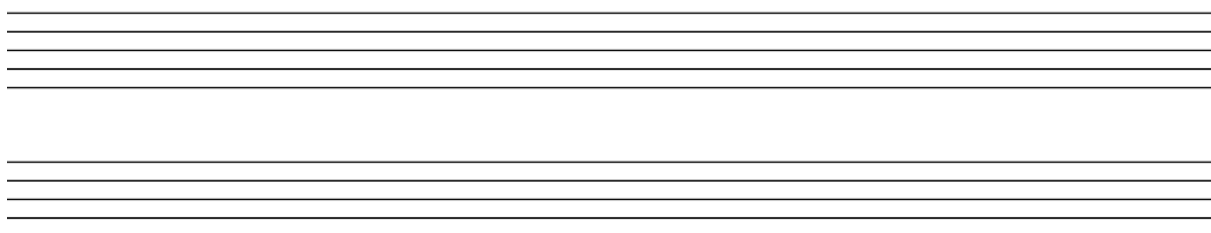
Es dur



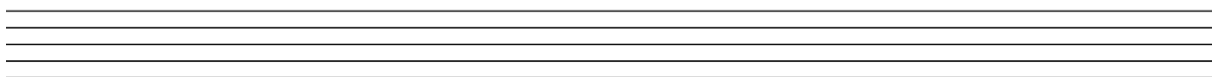
c mol

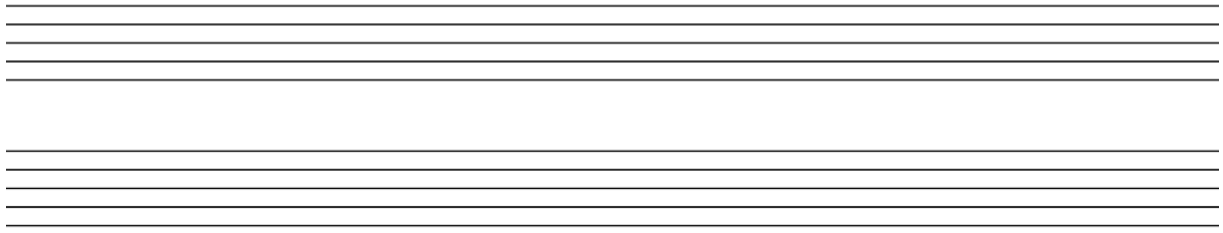


Napíš obe stupnice a vytvor aj ich trojzvuky v basovom klúči: Es dur od es a Es, c mol od c a C (dokopy 4 stupnice). Pomenuj noty v stupniciach.



Aby sme si zopakovali všetky noty, ktoré poznáme, pomenuj noty melódií prepíš melódiu od: c2 v husľovom klúči, c a C v basovom klúči.





Doplň pred notu krížik alebo béčko podľa názvu (noty s krížikmi majú príponu is, noty s béčkami es).

A musical staff in treble clef with a 4/4 time signature. It contains ten notes, each with a label below it. The notes and their labels are: a half note on G4 (labeled 'ges2'), a quarter note on F4 (labeled 'as1'), a quarter note on E4 (labeled 'es1'), a quarter note on D4 (labeled 'dis2'), a quarter note on C4 (labeled 'ces1'), a quarter note on B3 (labeled 'ais2'), a quarter note on A3 (labeled 'his'), a quarter note on G3 (labeled 'dis1'), a quarter note on F3 (labeled 'ges1'), and a quarter note on E3 (labeled 'fis2').

Pomenuj noty v basovom kľúči:

A musical staff in bass clef with a 4/4 time signature. It contains ten notes: a quarter note on F2 (with a sharp sign), a quarter note on G2, a quarter note on A2 (with a flat sign), a quarter note on B2, a quarter note on C3, a quarter note on D3 (with a sharp sign), a quarter note on E3 (with a flat sign), a quarter note on F3, a quarter note on G3, and a quarter note on A3 (with a sharp sign).